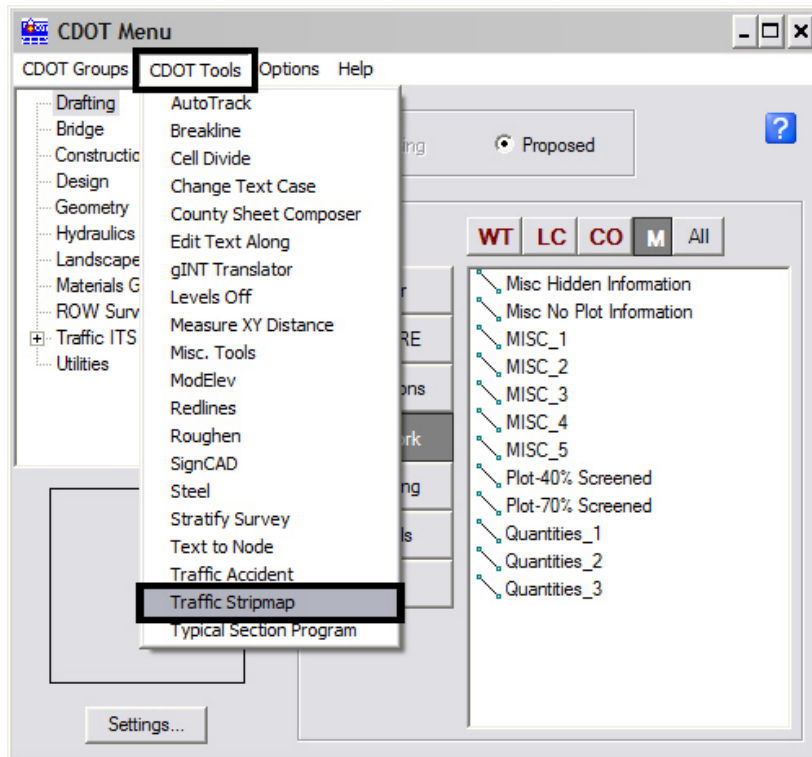


CDOT Traffic Stripmap

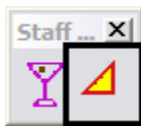


This document describes the steps used to create a stripmap in MicroStation from an existing database file.

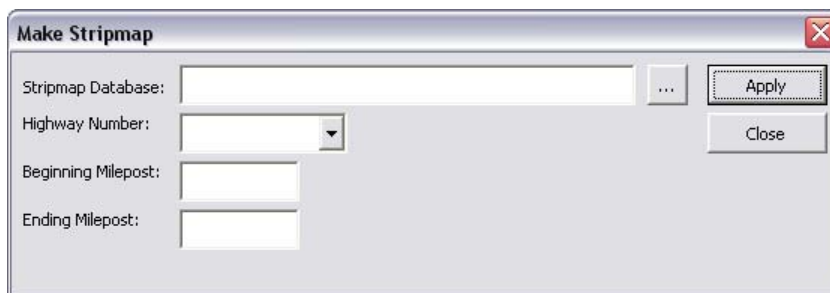
1. Open MicroStation and select the dgn file that will contain the Stripmap.
2. From the *CDOT Menu*, Select *Add On's > Traffic Stripmap*.



3. The *Staff Traffic* tool palette will appear. <D> the *Stripmap* icon to run the program.

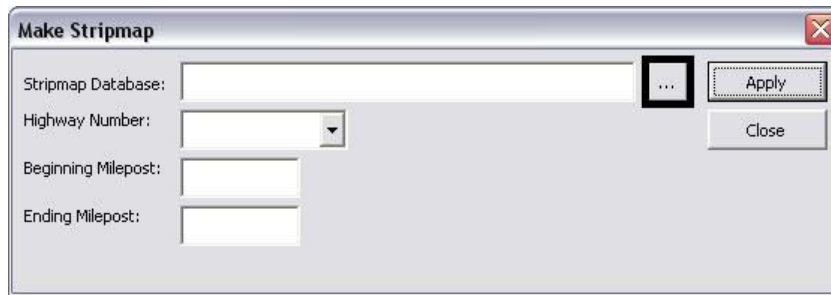


4. The *Make Stripmap* dialog box will open.

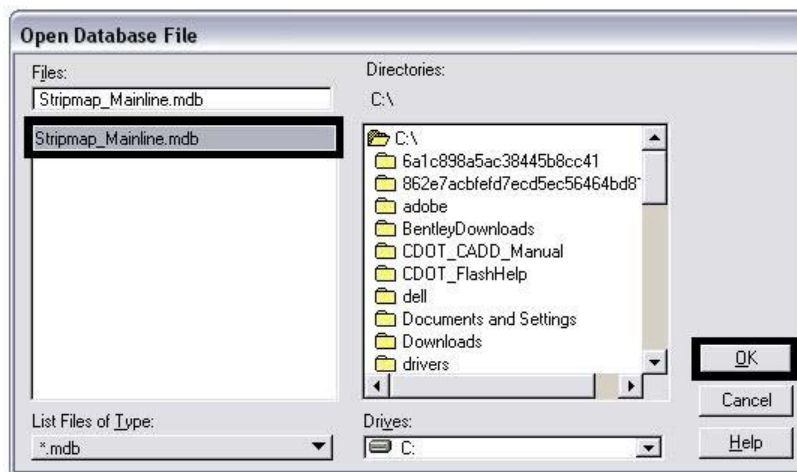


CDOT Traffic Stripmap.pdf

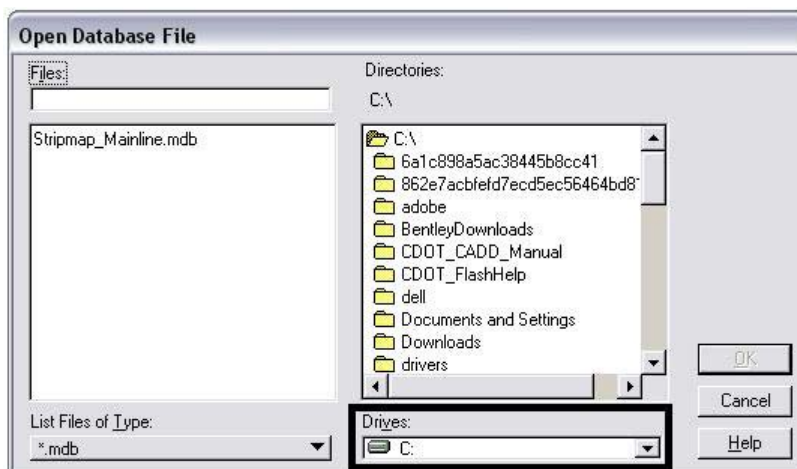
5. Select the desired *Stripmap Database* by <D> the ... button.



6. The *Open Database File* dialog box will appear. Navigate to the location of the file you want to use, highlight the file name, and <D> OK. In the example below, *Stripmap_Mainline.mdb* is used.

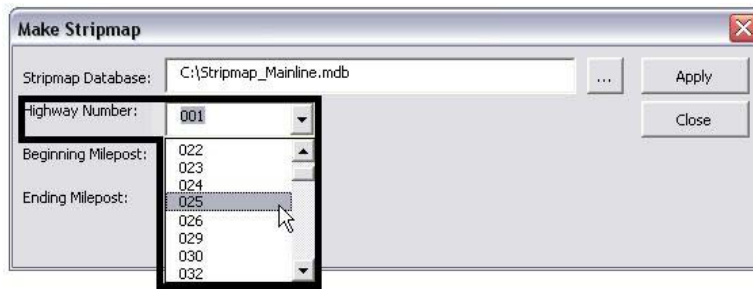


Note: To select from a server, use the drop-down list under *Drives:* to select a mapped drive.



CDOT Traffic Stripmap.pdf

7. Select the Highway from the *Highway Number* drop-down menu.



Note: When a highway is picked, its minimum and maximum mileposts are displayed to indicate the limits of the highway.



8. Finalize the report criteria by entering *Beginning Milepost* and *Ending Milepost* values.



Note: There is a recommended maximum number of database items that should not be exceeded for each report. Using a number greater than the recommended maximum could result in too much data being placed in a limited area, creating an unreadable report. If this number is exceeded, a prompt will be displayed noting this situation. In this situation, <D> **Cancel** to return to the *Make Stripmap* dialog box and redefine the criteria. If **OK** is selected, the report will be created but may be difficult to read.



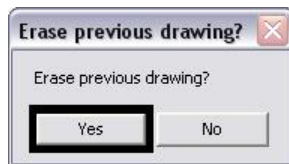
CDOT Traffic Stripmap.pdf

9. <D> **Apply** to run the Stripmap report.

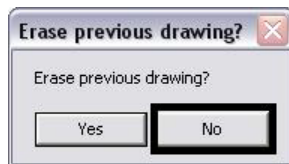


Note: This program will prompt you to delete the contents of the design model.

10. If **Yes** is chosen, all of the graphics in the design model will be erased and the stripmap data will be displayed.



11. If **No** is chosen, the existing data in the design model will be retained, and the stripmap data will be added to the dgn file.



Note: The stripmap data will be placed at the Global Origin (0,0) of the model. If the existing data is to be retained, be sure to move it clear of this location.

CDOT Traffic Stripmap.pdf

12. The Stripmap is generated. **Close** the program when finished. Below is an example of a finished stripmap.

